



FUNDACIÓN
GRUPO
EDUCATIVO | **MDG**
2012-2023



MISSION

Through an innovative and inclusive model, we strive to offer quality education for underprivileged girls, boys, and teenagers, at the same cost as that of a government-managed school.

WHO WE ARE

Board of Trustees

Eduardo Bastitta
Jorge Chrestia
Federico Brom
Gonzalo Castillo
María Paz Mendizabal

Roberto Souviron
Ricardo Torres
Pablo Ostapovich
José Sosa del Valle
Marta Cordo
Ignacio Barrenechea

**A team of more than 100
people with passion for
education**



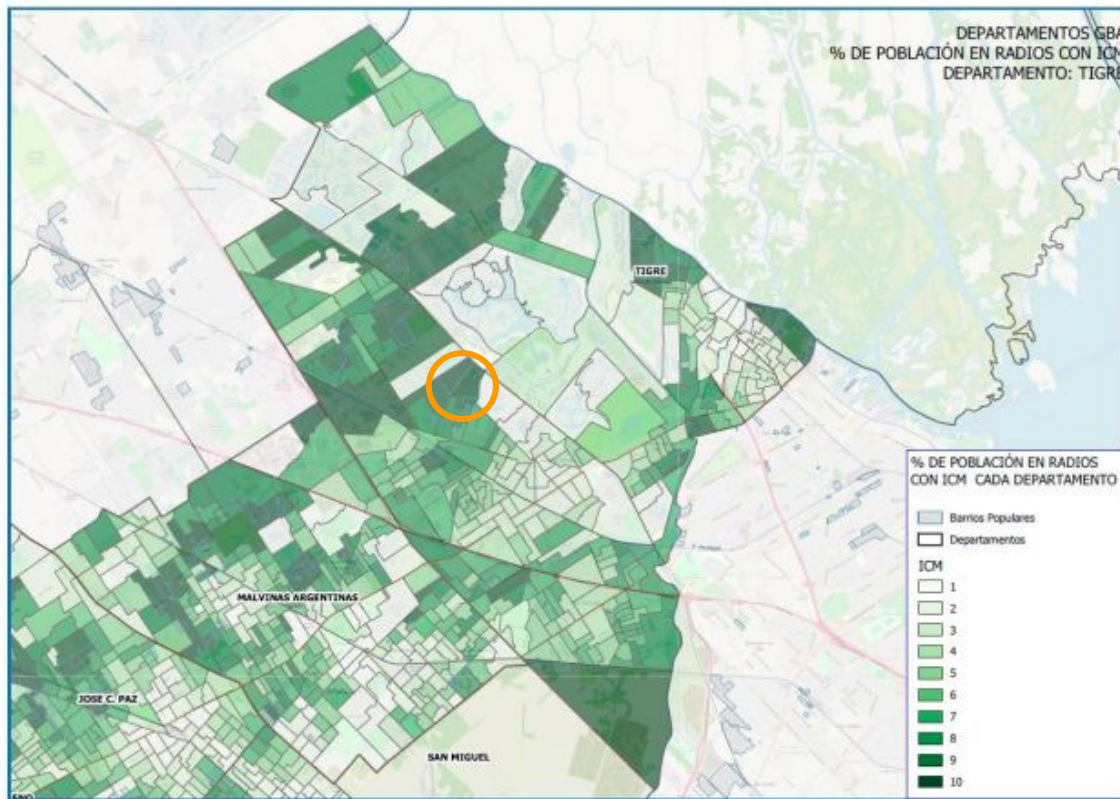
WHERE WE ARE

Las Tunas, General Pacheco - Tigre
25.000 inhabitants

According to the **Multiple Deprivation Index**, María de Guadalupe school is located in one of the areas of greatest socioeconomic vulnerability in Buenos Aires.

This Index considers the educational level of heads of household and housing: access to essential services, overcrowding, and quality of housing materials, among other factors.

Map 1: Index of deciles of deprivation from the census of the population in Las Tunas, Tigre, Buenos Aires.



Fuente: elaboración propia de SIEMPRO, sobre la base del CNPVH 2010.

OUR SCHOOL POPULATION



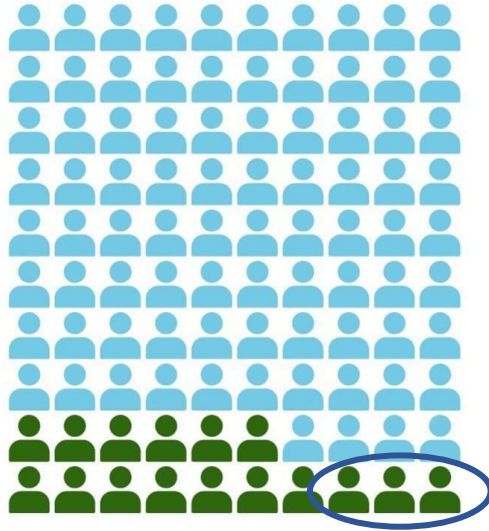
73% of families didn't finish secondary school

62% lack proper housing

42% live in overcrowdedness

Source: own elaboration based on socio-environmental surveys 2021

In the present context our mission is indispensable



16% of students in Argentina complete their secondary studies at the theoretical age and with satisfactory and advanced results in both language and mathematics
Only 3 out of 100 belong to the lowest socioeconomic tercile

Only 12% of young people in the lowest-income decile study at university.

Source: Argentinos por la Educación, 2022

María de Guadalupe school has a 99% promotion rate and nearly 50% of graduates is studying at university



MARÍA DE GUADALUPE SCHOOL

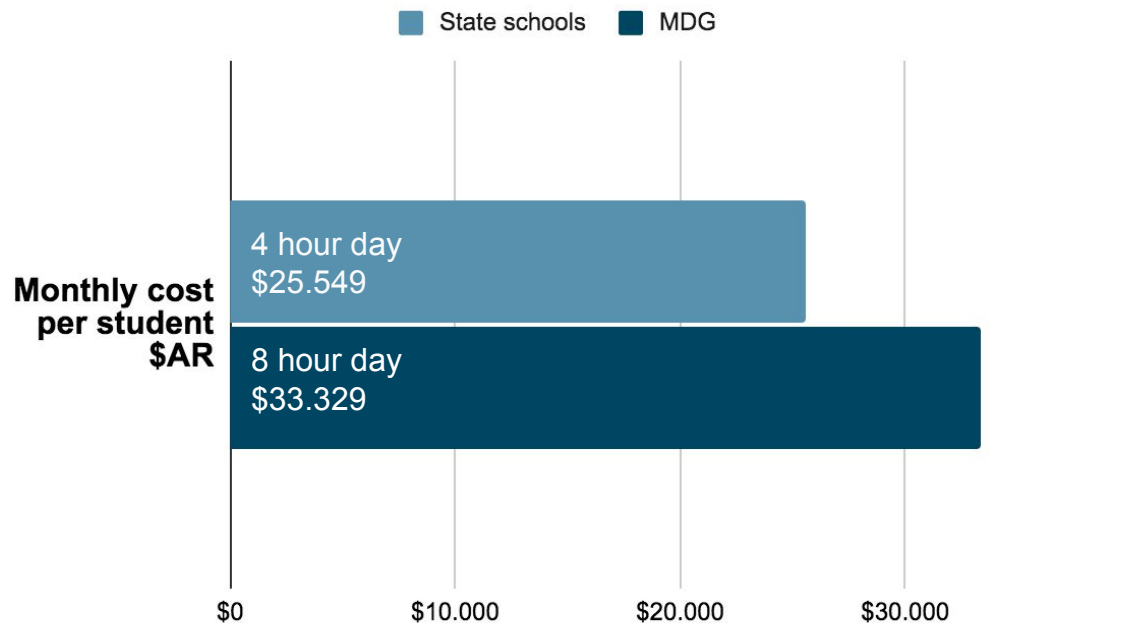
700 students in kindergarten, elementary and high school

- **Full-time schedule** in a **stimulating educational environment** that promotes the development of 21st-century skills;
- Professionalizing **curricular intensification in digital skills** (high school with training itineraries);
- Culture of **evaluation** and **continuous improvement**;
- Situated and constant **teacher training**;
- **Personalized support** for each student (inclusive education);
- Permanent work with student's **families**; and
- **Infrastructure** and **equipment** suitable for educational purposes

COST-EFFECTIVE QUALITY EDUCATION

We strive to expand and replicate our impact, offering vulnerable students a high-quality education at a lower cost than a government-managed school.

Cost per student - Buenos Aires state schools vs MDG 2022

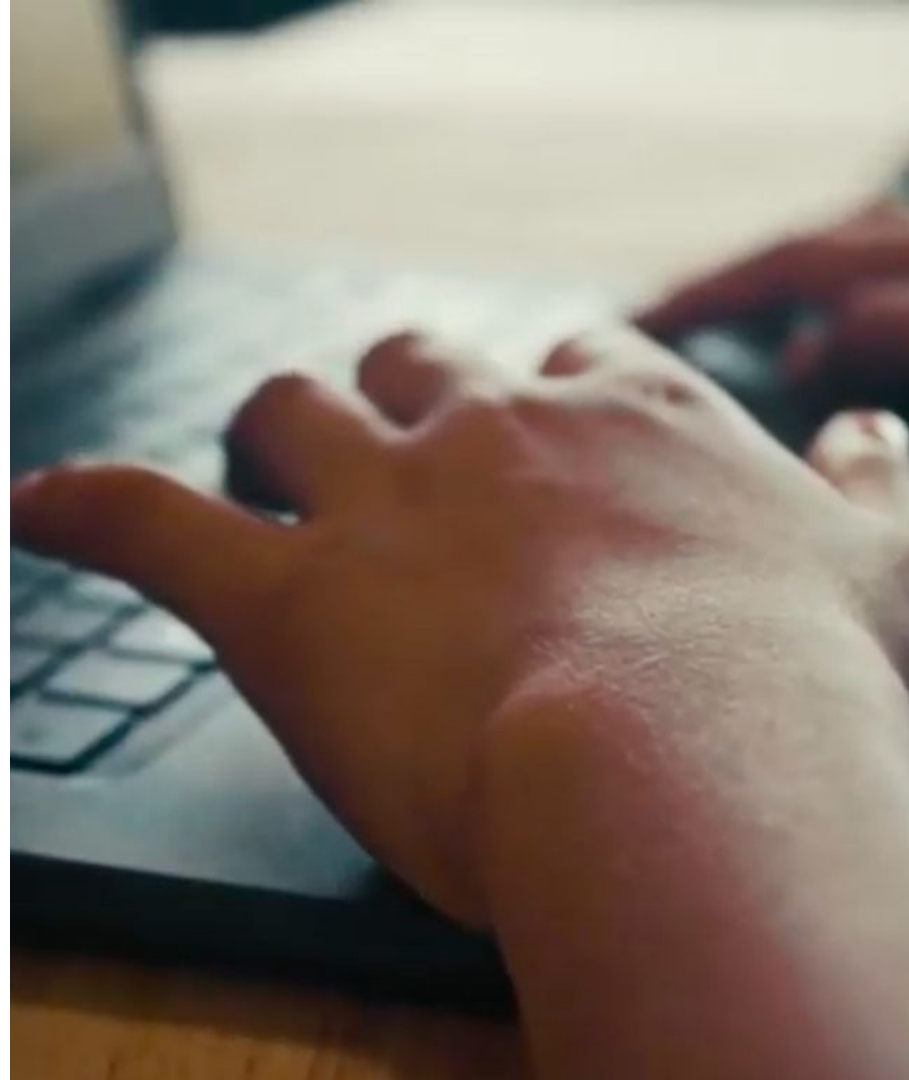


Source: own elaboration based on data from the Ministry of Education of Argentina, elementary and secondary schools 2020, adjusted for inflation

EMPLOYABILITY PROGRAM

150 GRADUATES from María de Guadalupe and other neighboring institutions

- Training in digital capabilities
- Career Guidance
- Visits to potential employers
- Internships
- Alliances with companies to promote employment



2022 IN NUMBERS

10 years since its opening

775 students have passed through our classrooms

148 alumni from the secondary school

590 students attending the primary and secondary levels

393 families committed to the process of learning

254 applicants for 1st grade (50 vacancies)

778 companies, families and individual donors supporting the project

28 allied institutions: government offices, NGOs and other educational institutions

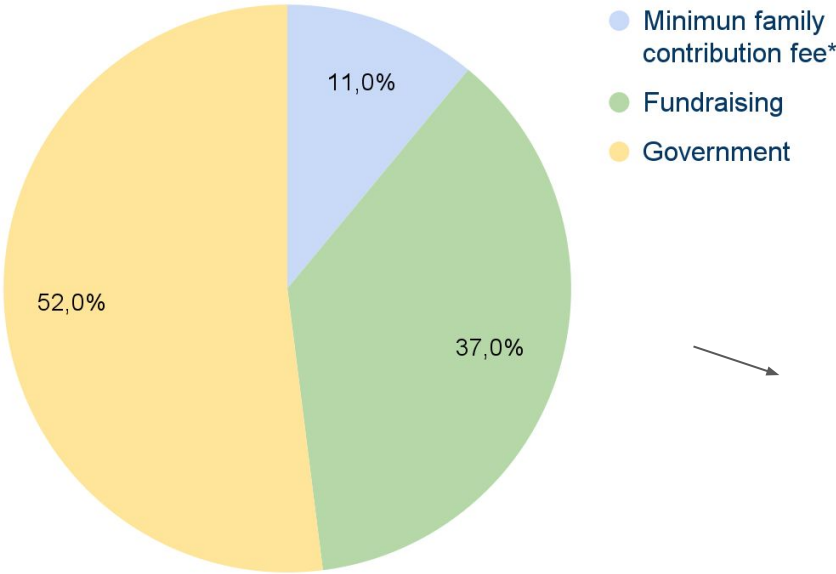


OUR PLAN FOR THE FUTURE:

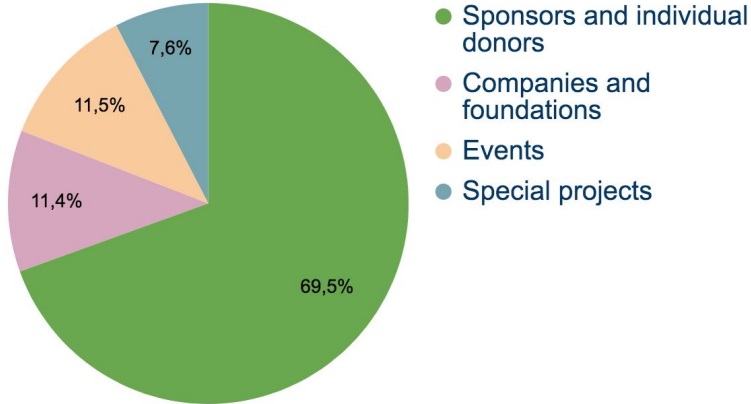
- THE LAUNCHING OF KINDERGARTEN: 100 students in K4 and K5 in 2023
- SPORTS' CAMPUS
- IMPACT EXPANSION: replicability of our educational model.



SUSTAINABILITY



Fundraising



*The commitment of families directly favors the children's school careers. For this reason, it was decided to have a minimum fee for those families who can contribute to their children's education. Since our mission is to expand access to quality education in underprivileged populations, the admissions policy contemplates that students with fewer opportunities have access to scholarships.

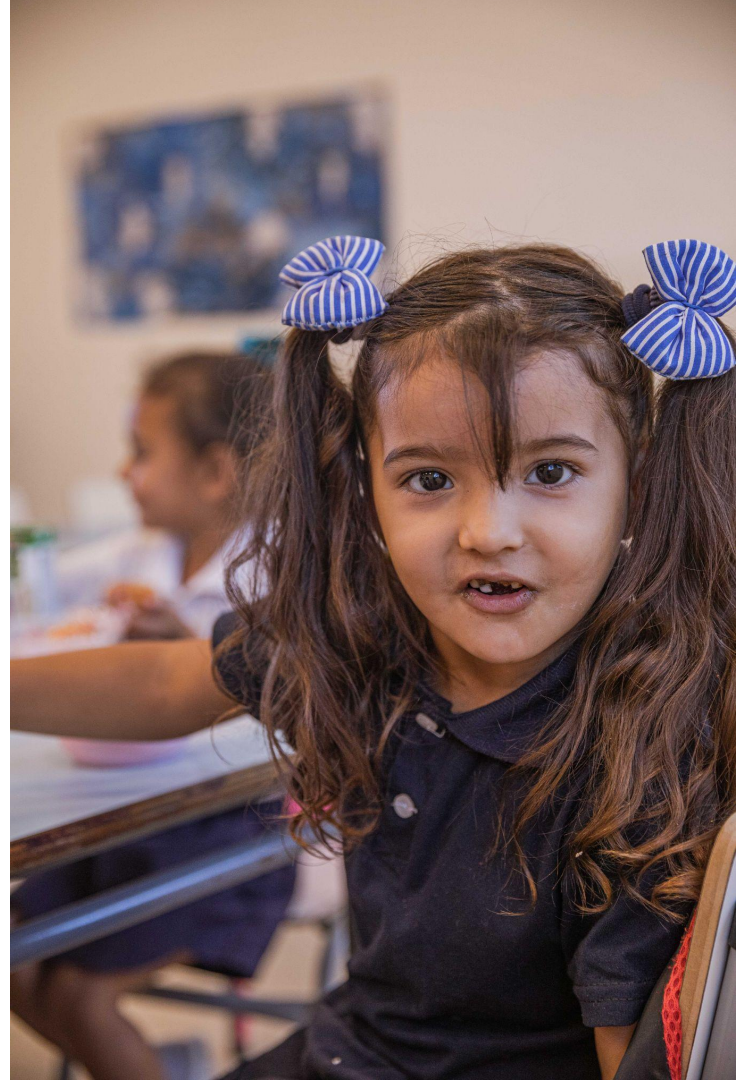
SPONSOR EDUCATION

ONLY **684 USD** is needed to support a student for the whole year!

Today, 10% of the cost per student is supported by family contributions, 60% by state contributions, and the remaining 30% is sought through donations.

Sponsors are a fundamental part of the spirit of the Foundation, and that is why we make them part of institutional life. The doors of the school are always open to welcome them.

Each sponsor receives our periodic communications, two special reports with information on the students' educational results, newsletters, and special events invitations.



THANK YOU



FUNDACIÓN
GRUPO
EDUCATIVO

MDG

Visit us

Av. Constituyentes 2920 - Las Tunas
Gral. Pacheco - Tigre - Buenos Aires
desarrollo@mariaguadalupe.org.ar
+549111-056-0445